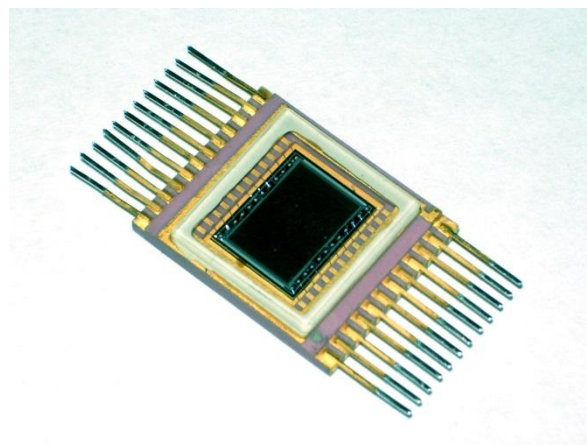


LINEAR CCD 6L

CCD 6L has two photosensitive shift registers (264 pixels each). The device can be used as linear optic-electrical converter for different TV systems (measurement, surveillance, guidance, etc).



SPECIFICATIONS

Dimensions (with contacts), mm	33.9 × 15.75 × 3.0
Spectral response, μm	0.4 ÷ 1.0
Number of pixels	264 × 2
Distance between registers, mm	8.7
Photosensitive area length, mm	6.0
Pixel size, (HxV), μm	23×50
Output signal frequency (max.), MHz	0.25
Number of control phases	3
Power supply voltage, V	18
Saturation signal voltage, V	3.0
Luminous sensitivity, V/lx·s	40
Discretization pitch, μm	23
Dynamic range, dB	60
Output signal nonuniformity, %	10